



## **FAMILIEBOLIGER I BÜLOWS PALÆ**

Transformation af Statens Veterinære Serumlaboratorium til beboelse





Fotos: Pernille Greve





Foto: Juli Living





Foto: Juli Living





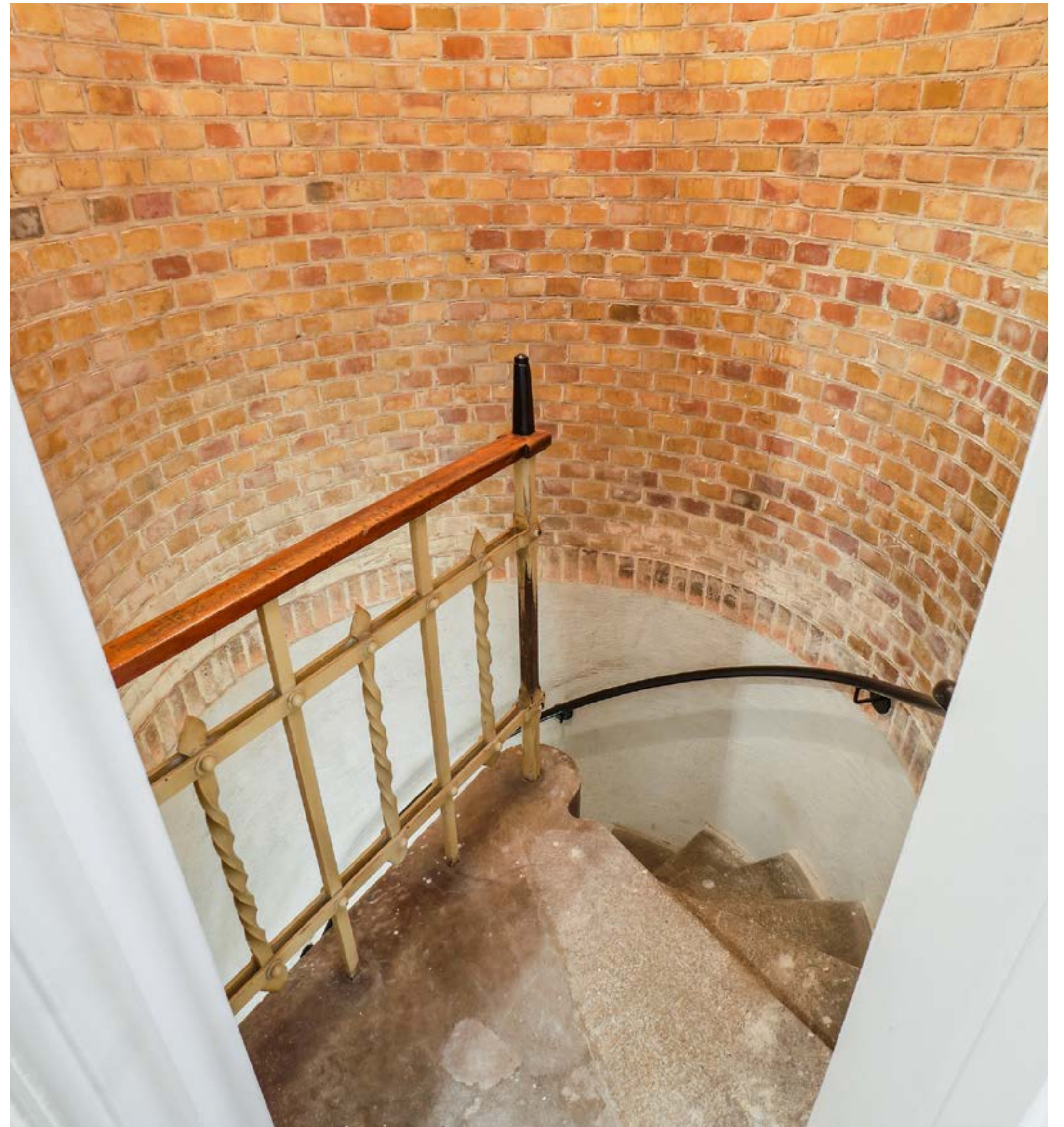


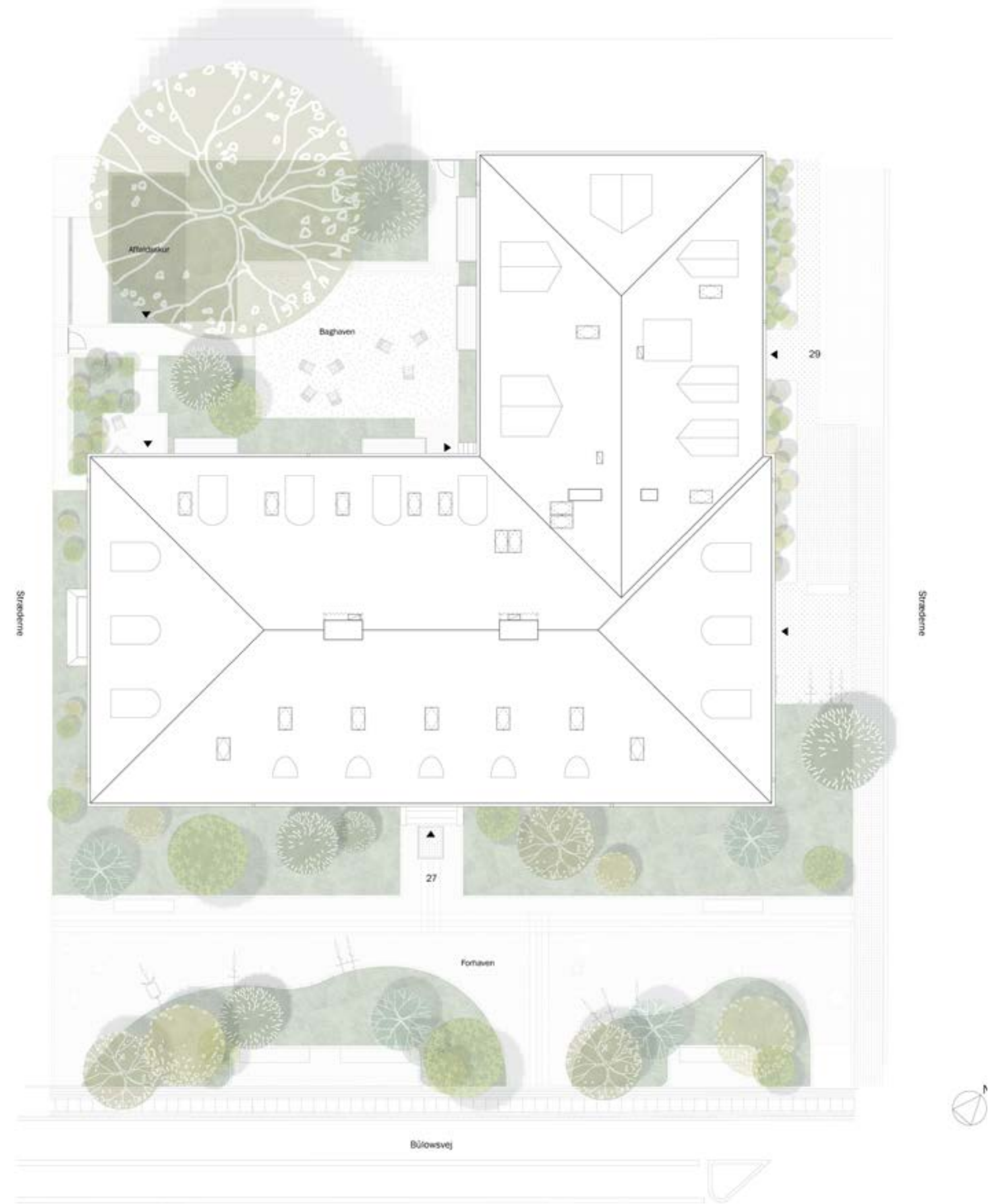








Foto: Juli Living



Situationsplan: EFFEKT





Foto: Juli Living

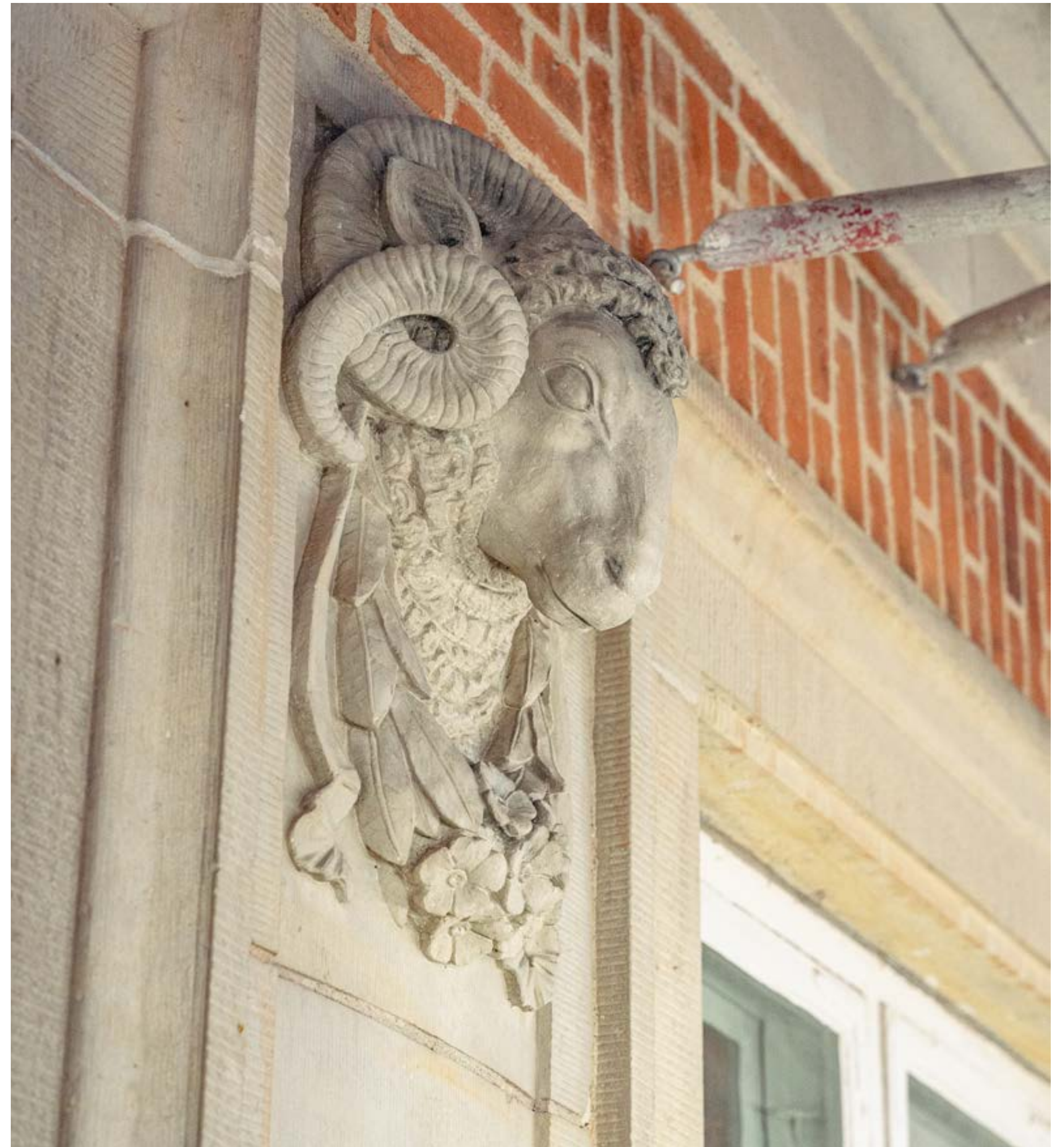


Foto: Søren Schaumburg Jensen

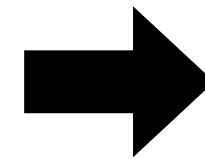




Fotos: Søren Schaumburg Jensen



Foto: Juli Living



Fotos: Søren Schaumburg Jensen



Foto: Juli Living





Fotos: Søren Schaumburg Jensen

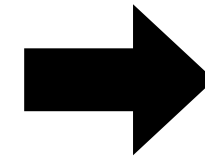
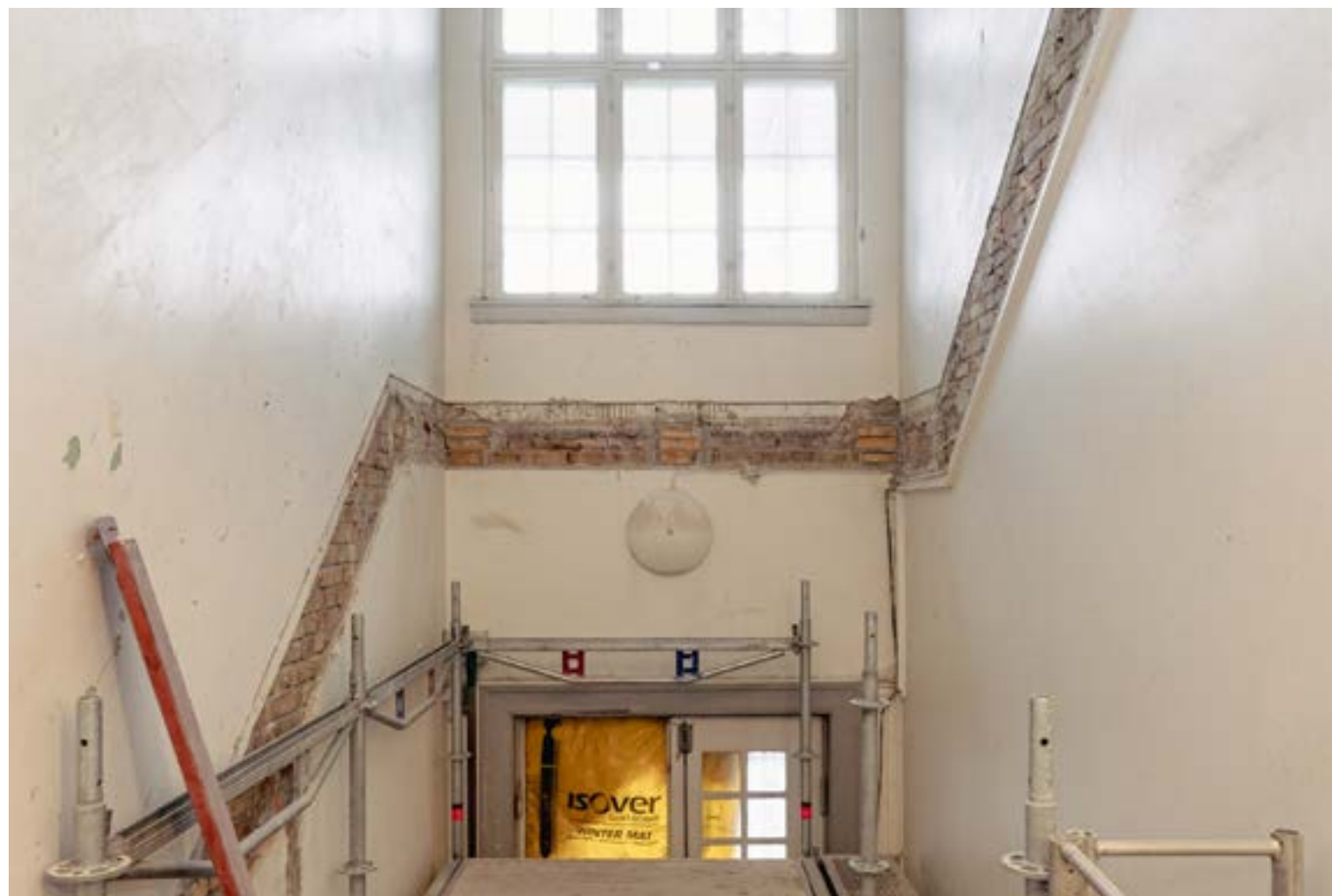


Foto: Juli Living



Fotos: Søren Schaumburg Jensen



Foto: Juli Living





Foto: Pernille Greve